



10 Adur Avenue | | Shoreham-By-Sea | BN43 5NN



ESTATE AGENT



10 Adur Avenue | | Shoreham-By-Sea | BN43 5NN

£695,000

*** £695,000 ***

*** PLEASE BE AWARE THIS PROPERTY HAS A POSSESSORY TITLE ***

WARWICK BAKER ESTATE AGENTS ARE DELIGHTED TO OFFER THIS RARELY AVAILABLE SEMI-DETACHED HOUSE. LOCATED IN NORTH SHOREHAM. THE PROPERTY HAS RECENTLY BEEN SYMPATHETICALLY REFURBISHED THROUGHOUT TO A VERY HIGH STANDARD BY THE EXISTING VENDOR. THE PROPERTY BENEFITS FURTHER FROM AN ENTRANCE HALL, 14' SOUTH FACING LOUNGE, FOUR BEDROOMS, DINING ROOM, 17' KITCHEN/BREAKFAST ROOM, UTILITY ROOM, GROUND FLOOR CLOAKROOM, FAMILY BATHROOM, EN-SUITE SHOWER ROOM TO THE MAIN BEDROOM, 98' REAR GARDEN OFF ROAD PARKING SPACE. INTERNAL VIEWING HIGHLY RECOMMENDED BY THE VENDOR'S SOLE AGENT TO FULLY APPRECIATE THIS UNIQUE PROPERTY. NO UPWARD CHAIN.

- ENTRANCE HALL
- 17' KITCHEN/BREAKFAST ROOM
- 98' REAR GARDEN
- FOUR BEDROOMS
- UTILITY ROOM + GROUND FLOOR CLOAK ROOM
- NO UPWARD CHAIN
- 14' SOUTH FACING LOUNGE
- FAMILY BATHROOM + EN-SUITE SHOWER ROOM TO MAIN BEDROOM
- DINING ROOM
- OFF ROAD PARKING

Part frosted double glazed front door leading to:

ENTRANCE HALL

15'4" in length (4.68 in length)

Frosted double glazed window to the front, 'KARNDEAN' style flooring with under floor heating, LED downlighting, door giving access to under stairs storage cupboard.

Oak door off entrance hall to:

LOUNGE

14'7" x 11'0" (4.46 x 3.37)

Into square bay with double glazed windows to the front having a favoured southerly aspect, 'KARNDEAN' style flooring with under floor heating, LED downlighting.

Oak door off entrance hall to:

GROUND FLOOR CLOAKROOM

Comprising low level wc, modern vanity unit with inset wash hand basin with contemporary style mixer, double doored storage cupboard under, 'KARNDEAN' style flooring with under floor heating, LED downlighting, extractor fan.

Oak door off entrance hall to:

DINING ROOM

11'9" x 10'9" (3.60 x 3.30)

'KARNDEAN' style flooring with under floor heating, LED downlighting.

Oak door off dining room to:

UTILITY ROOM

6'9" x 5'4" (2.07 x 1.63)

Comprising 'QUARTZ' work top with inset sink unit with contemporary style mixer tap, slow closing storage cupboards under, matching 'QUARTZ' backsplash, adjacent matching worktop with space and plumbing for washing machine under, storage cupboards either side, matching backsplash, complimented by matching wall units over, 'IDEAL' wall mounted gas fired combination boiler to the side, 'KARNDEAN' style flooring with under floor heating, double glazed windows to the side having an easterly aspect, LED downlighting, extractor fan.

Opening off dining room to:

KITCHEN/BREAKFAST ROOM

17'0" x 11'6" (5.19 x 3.53)

Comprising 'L' shaped 'QUARTZ' work top with inset sink unit with brass mixer tap, inset 'LAMONA' stainless steel gas five ring hob to the side, range of slow closing drawers and cupboards under, built in 'LAMONA' dishwasher to the side, matching 'QUARTZ' backsplash, contemporary style extractor hood, adjacent matching worktop with cupboard under, matching backsplash, built in integrated microwave over, storage cupboard over, built in double electric ovens to the side, storage cupboards under and over, built in integrated fridge/freezer to the side, 'KARNDEAN' style flooring with under floor heating, double glazed windows to the side having an easterly aspect, range of double glazed bi-fold doors to the rear, lofted double glazed roof light, LED downlighting.

Stairs with bannister and spindles up from entrance hall to:

FIRST FLOOR LANDING

Frosted double glazed windows to the side, LED downlighting.

Oak door off first floor landing to:

BEDROOM 2

14'11" x 10'2" (4.57 x 3.11)

Into square bay with double glazed windows to the front having a favoured southerly aspect with glimpses of The English Channel, double panelled radiator, LED downlighting.

Oak door off first floor landing to:

BEDROOM 3

11'11" x 11'6" (3.64 x 3.53)

Double glazed windows to the rear, double panelled radiator, LED downlighting.

Oak door off first floor landing to:

BEDROOM 4

7'7" x 6'11" (2.33 x 2.13)

Into square bay with double glazed windows to the front having a favoured southerly aspect with glimpses of The English Channel, double panelled radiator, LED downlighting.

Oak door off first floor landing to:

FAMILY BATHROOM

Being part tiled, comprising panel bath mixer tap with separate shower attachment, glass shower screen, low level wc, modern vanity unit with inset wash hand basin with contemporary style mixer, double doored storage cupboard under, heated hand towel rail, frosted double glazed windows, LED downlighting, extractor fan.

Turning stair with bannister and spindles up from first floor landing to:

SECOND FLOOR LANDING

LED downlighting.

Oak door off second floor landing to:

BEDROOM 1

18'8" x 12'9" (5.70 x 3.91)

Being 'L' shaped, double glazed windows to the rear, sloping ceiling with two 'VELUX' windows to the double glazed windows to the front having a favoured southerly aspect with glimpses of The English Channel, double panelled radiator, LED downlighting.

Oak door off bedroom 1 to:

EN-SUITE SHOWER ROOM

Being part tiled, comprising low level wc, modern vanity unit with inset wash hand basin with contemporary style mixer, double doored storage cupboard under, heated hand towel rail, frosted double glazed windows, LED downlighting, extractor fan, step in fully tiled shower cubicle with built in shower, with rainfall style shower head with separate shower attachment, glass shower door.

FRONT DRIVE

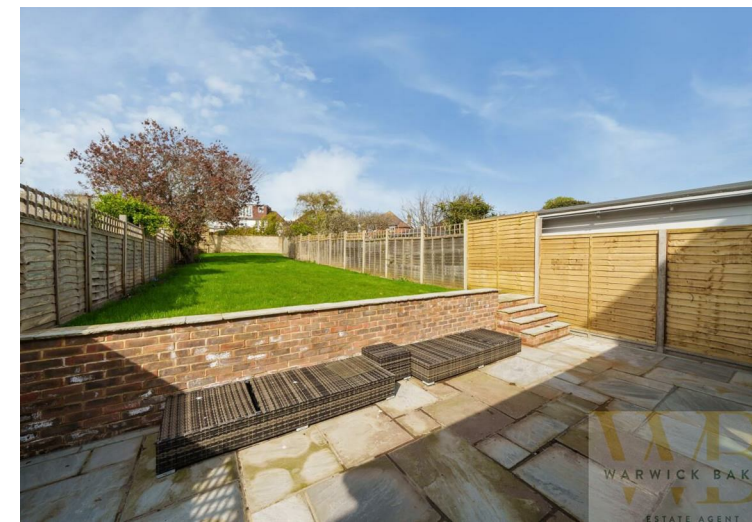
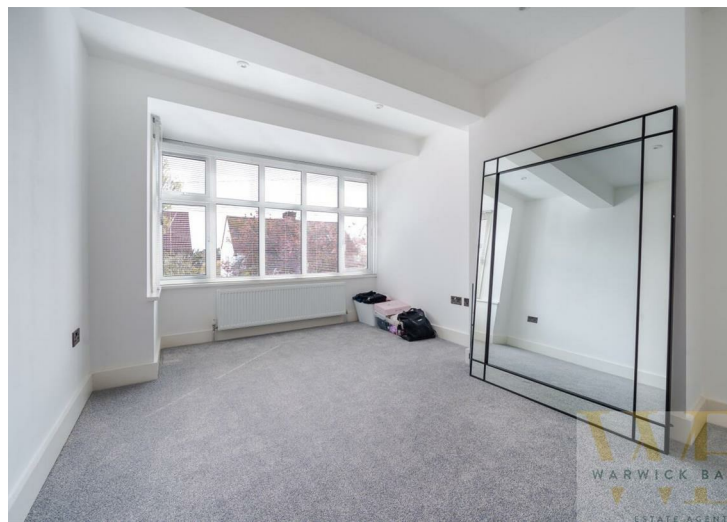
19'8" x 19'8" (6.00 x 6.00)

Laid to 'RUMBLESTONE' with off road parking for two vehicles, enclosed by a low brick wall to the side, picket fencing to the front having a favoured southerly aspect, shared driveway leading to side gate giving access to:

REAR GARDEN

98'5" x 24'11" (30.00 x 7.60)

Patio slab area, four steps up to lawn area, two mature trees, enclosed by high walls and fencing.



Adur Avenue, Shoreham-by-Sea, BN43

Approximate Area = 1424 sq ft / 132.2 sq m
 Limited Use Area(s) = 67 sq ft / 6.2 sq m
 Total = 1491 sq ft / 138.4 sq m

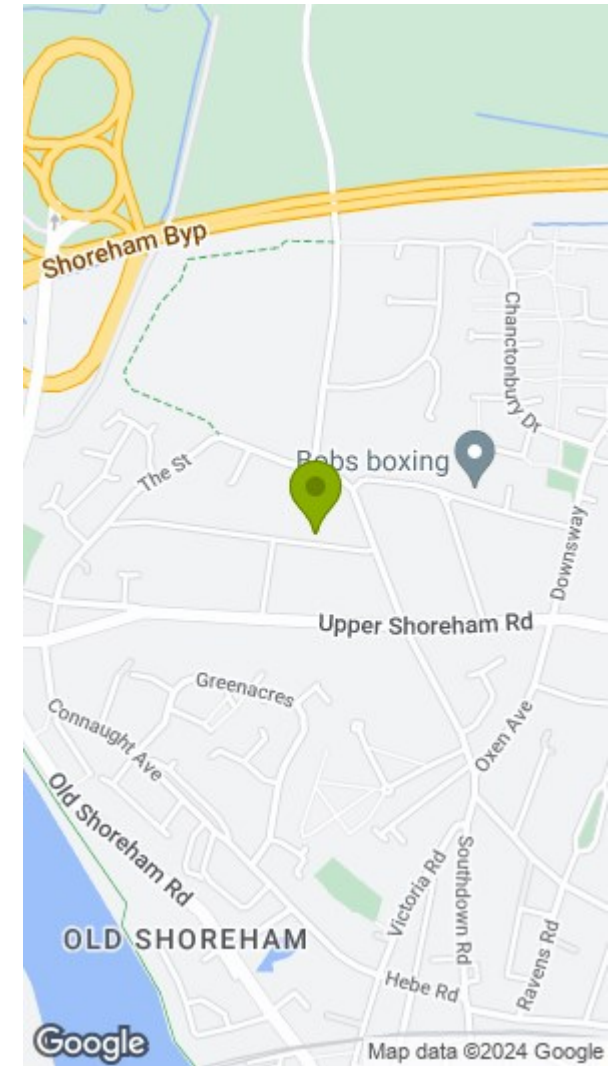
For identification only - Not to scale



Denotes restricted head height



RICS Certified Property Measurer
 Floor plan produced in accordance with RICS Property Measurement Standards incorporating International Property Measurement Standards (IPMS2 Residential). © richcom 2024. Produced for Warwick Baker Estate Agent Ltd. REF: 1114864



Disclaimer

* These particulars are intended to give a fair and substantially correct overall description for the guidance of intending purchasers and do not constitute an offer or part of a contract. Prospective purchasers and/or lessees ought to seek their own independent professional advice.

* All descriptions, dimensions, areas, references to condition and necessary permissions for use and occupation and other details are given in good faith and are believed to be correct, but any intending purchasers should not rely on them as statements or representations of fact, but must satisfy themselves by inspection or otherwise as to the correctness of each of them.

* All measurements are approximate

Energy Efficiency Rating		Environmental Impact (CO ₂) Rating			
Very energy efficient - lower running costs	Current	Potential	Very environmentally friendly - lower CO ₂ emissions	Current	Potential
(92 plus) A			(92 plus) A		
(81-91) B			(81-91) B		
(69-80) C			(69-80) C		
(55-68) D			(55-68) D		
(39-54) E			(39-54) E		
(21-38) F			(21-38) F		
(1-20) G			(1-20) G		
Not energy efficient - higher running costs			Not environmentally friendly - higher CO ₂ emissions		
England & Wales	EU Directive 2002/91/EC	83	England & Wales	EU Directive 2002/91/EC	